

HELPFUL WEBSITES

NJ Department of Education Office of Special Education

- www.nj.gov/njded/specialed

Center for Outreach and Services for the Autism Community

- www.cosac.org

Parents of Autistic Children

- www.poac.net

Children and Adults with Attention Deficit/Hyperactivity Disorder

- www.chadd.org

Special Education Resources on the Internet

- Seriweb.com

National Center for Learning Disabilities

- www.ncld.org

Learning Disabilities On-Line

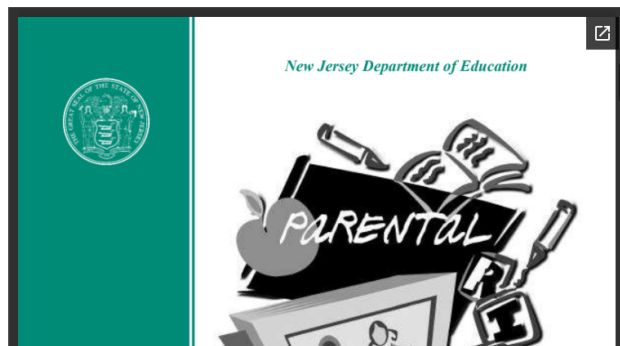
- www.ldonline.org

Inclusive Schools and Communities

- www.inclusion.com

Parental Rights in Special Education (P.R.I.S.E.) & Special Education Law

Know Your Rights and the Rights of Your Child in Special Education.



Parental Rights in Special Education

[Revised Parental Rights in Special Education \(PRISE\) - May 2023](#)

[Spanish](#) (Revised August 2016)

[Arabic](#) (Revised August 2016)

[Chinese](#) (Revised August 2016)

[Portuguese](#) (Revised August 2016)

Transition Planning

"What will happen to my child after they graduate and how can I prepare them for what comes next?"

By age 14, your child's IEP will contain a transition plan which begins to consider and reflect their post-high school plans regarding higher education, employment, military service, vocational training, and/or independent living. The IEP will include a statement of their transition service needs; including courses required for graduation and community based experiences, in addition to referrals to state agencies like the Department of Developmental Disabilities (DDD) and DVRS.

The student's special education programs end once the student fulfills the goals in their IEP or at the end of the school year when they turn 21.

Age 14:

- Before age 14, starting talking to your child about their interests and what they may see themselves doing as a career or job after they graduate.
- Begin to give your child an opportunity to interact with money, engage them in the surrounding community, do volunteer work together, and begin to encourage more independence.
- As your child gets closer to age 18, begin to think about whether or not applying for guardianship will be necessary. For more information regarding guardianship and alternatives to guardianship, please visit [The Arc of NJ's Guardianship & Alternatives Options Go Bag](#) or view their [Guardianship Webinar](#).

At Age 18:

- **Apply for Social Security benefits.** The Social Security Benefit Application can be found [HERE](#).
- **Apply for Medicaid.** [Apply for Medicaid/NJ Family Care online](#). Information on Medicaid eligibility as it relates to DDD is available [HERE](#). **Please note: individuals who qualify for SSI benefits, will automatically receive Medicaid benefits.*
- **Start the DDD application process.** To determine eligibility, contact the Intake Unit at the DDD Community Services Office in Voorhees at (856) 770-5900 or start the application process through the [DDD website](#). **Please note: individuals seeking DDD services can begin the application process at the age of 18, but will continue to receive service from PerformCare and the school system until the age of 21.*
- **Complete a New Jersey Division of Vocational Rehabilitation Services (DVRS) referral.** Take this step if your child does NOT plan to attend college, trade school, or participate in the Job Transition II program but may still need support to obtain or maintain employment after they graduate, complete the [DVRS Confidential Referral Form is on this page](#) or contact the Camden County DVRS office at 856-614-2500 to complete the form over the phone. For more information about the types of services available through DVRS, click [HERE](#).

During the School Year Your Child Turns 21:

Between September and January:

- **Ensure you are eligible for DDD services.** Follow the steps listed above to determine eligibility or apply for DDD services. If you started the DDD application process previously, eligibility must be confirmed regardless of past approval.

- **Ensure you are eligible for Medicaid.** Follow the steps listed above to determine eligibility for Medicaid and contact the [Medicaid Eligibility Help Desk](#) if you have any questions. If your Medicaid eligibility is denied or terminated, please complete DDD's [Medicaid Eligibility Troubleshooting Form](#) and submit it, along with a copy of the Medicaid denial letter, to the [Help Desk](#).
- **Complete the NJ Comprehensive Assessment Tool (NJ CAT).** To complete this step, please contact the Intake Unit at the DDD Community Services Office in Voorhees at (856) 770-5900 to request access to complete the NJ CAT through the online survey or by phone call.

Between September and June:

- **Participate in activities offered through the [Planning for Adult Life](#) project.** This project was developed by *The Arc of New Jersey* and *Community Access Unlimited* with funding from the New Jersey Division of Developmental Disabilities. Check out their website for details about training sessions, resource materials, webinars, student groups, and parent groups covering topics for students with intellectual and developmental disabilities between the ages of 16-21 and their families. Topics covered through this project include but are not limited to transition planning, guardianship, employment/post-secondary education, housing, self-direction, self-advocacy/awareness, legal/financial planning, health/behavioral health, guardianship, building/maintaining community ties, and friendships.
- **Identify the student's vision for work and life and supports he/she may need through Person-Centered Planning.** Use [DDD's Person-Centered Planning Tool \(PCPT\)](#) to help get you started.
- **Research Service Providers and Support Coordination Agencies.** Potential Support Coordination Agencies can be found through the [Provider Search Database](#) using the following three steps:
 1. Under Filter, select "Service" and check

Support
Coordination

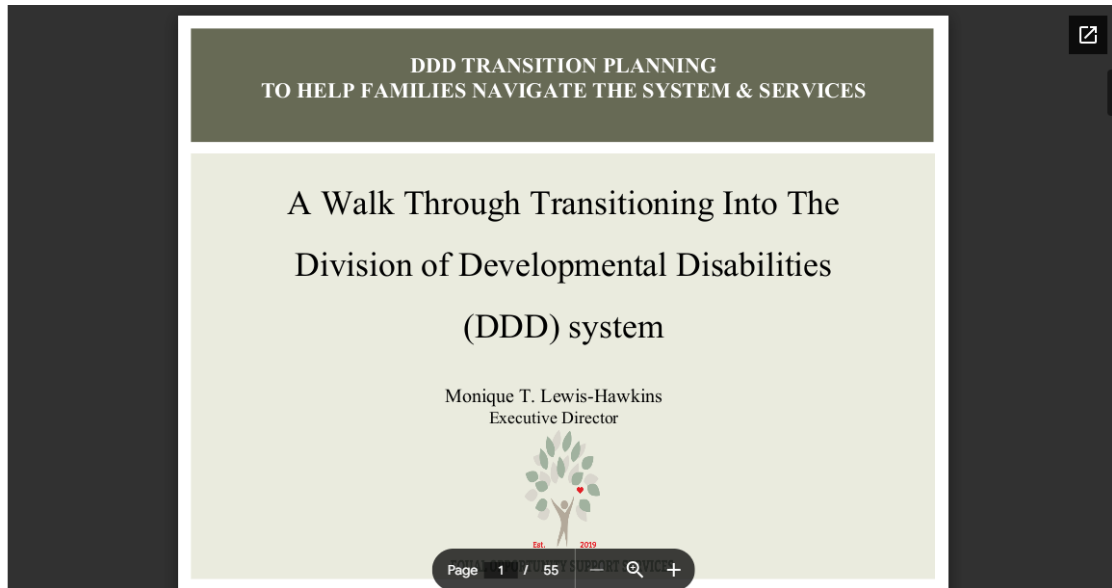
2. Select “County Served” and select the county in which the individual resides
3. Click the magnifying glass. If you do not have a preference, you can choose to have the Division auto-assign one to you.

Before March:

- **Complete and submit the Support Coordination Agency (SCA) Selection Form.** This form will be provided through the Intake Unit within your DDD Community Services Office and the completed SCA Selection Form should be submitted to DDD.SCACHoice@dhs.state.nj.us. DDD will process these forms to confirm DDD eligibility, Medicaid eligibility, and the completion of the NJCAT. The Support Coordination Agency will not be assigned until April. Review the Research Service Providers and Support Coordination Agencies section above for help identifying agencies.

April to June:

- **Develop the Individualized Service Plan (ISP).** The Support Coordinator will be responsible for writing the ISP, with guidance from the planning team including, the individual, support coordinator, family, providers, etc., through the Person-Centered Planning process and information gathered from the NJ CAT. **The ISP should be completed and approved prior to exiting the school system in order for services/supports to be available upon graduation.*



Additional Contacts:

- Autism New Jersey Helpline: 800-4-Autism (800-428-8476)
- The ARC of NJ, Planning for Adult Life: 732-246-2525
- Statewide Parent Advocacy Network (SPAN):
973-642-8100
- NJ Division of Developmental Disabilities: 800-832-9173
- NJ Division of Developmental Disabilities Community
Services Office, Voorhees: (856) 770-5900
- PerformCare: 877-652-7624

Child Find Information

Do you have or know a child with a diagnosed or suspected educational disability? Do you have a child who may be experiencing significant physical, medical, cognitive, language, or emotional difficulties? Does your child have medical problems or a confirmed diagnosis of a particular disorder?

If so, your child may require a comprehensive evaluation from the district's Child Study Team (CST) in order to determine if he/she may be eligible for Special Education Services. The Black Horse Pike Regional School District offers a continuum of programs to address children's special education needs. Each of our three high schools has programs ranging from in-class resource center support to pull-out resources center instruction to more restrictive self-contained classes.

Parents/guardians of children with known or suspected educational disabilities are urged to contact:



**BLACK HORSE PIKE
REGIONAL SCHOOL DISTRICT**

WHERE INSPIRING EXCELLENCE IS OUR STANDARD
AND STUDENT ACHIEVEMENT IS THE RESULT



Mrs. Joanne Fisher

***Administrative Assistant to the Director of Special Services
& Homeless Liaison***

jfisher@bhprsd.org

Phone: 856-227-4106, Extension: 8013

Fax: 856-842-1510

Child Study Team Administrative Assistants



Mrs. Janet McCarthy

*Triton Regional High
School*

jmccarthy@bhprsd.org

(856) 939-4500,
Extension: 2051



**Mrs. Christine
Richards**

*Highland Regional High
School*

crichards@bhprsd.org

(856) 227-4100,
Extension: 4047



Ms. Bridget Norcross

*Timber Creek Regional High
School*

bnorcross@bhprsd.org

(856) 232-9703,
Extension: 6037



Mr. Peter Spezzano

School Psychologist

(856) 227-4100

Extension: 4049

pspezzano@bhprsd.org

Ms. Brittany Schotter

School Social Worker

(856) 227-4100

Extension: 4048

bschotter@bhprsd.org



Mrs. Stacey Doherty

Learning Disabilities

Teacher Consultant

(856) 227-4100

Extension: 4063

sdoherty@bhprsd.org



Triton

REGIONAL HIGH SCHOOL

Home of the Mustangs



**Mrs. Melinda
Brokenshire**

Learning Disabilities

Teacher Consultant

(856) 939-4500,

Extension: 2052



Ms. Kayla Harrell

School Social Worker

(856) 939-4500,

Extension: 2062

kpiccari@bhprsd.org



Ms. Carly Pineiro

School Psychologist

CARE Program

SCMD Program

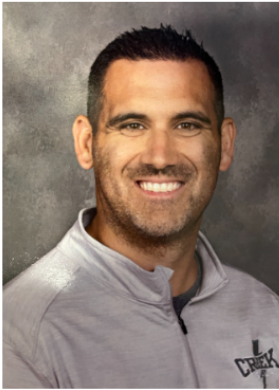
(856) 939-4500,

Extension: 2063

cpineiro@bhprsd.org



Timber Creek
REGIONAL HIGH SCHOOL
Home of the Chargers



Joseph DeVecchis
*Learning Disabilities
Teacher Consultant*
(856) 232-9703,
Extension: 6019
jdevecchis@bhprsd.org



Michael McIntire
School Psychologist
(856) 232-9703,
Extension: 6038
mmcintire@bhprsd.org



Joyce Goulburn
School Social Worker
(856) 232-9703,
Extension: 6040
jgoulburn@bhprsd.org

District Child Study Team Members



Tara Brons
[Welcome Back Video](#)
*District Speech-Language
Pathologist*
(856) 227-4100
Extension: 4280
tbrons@bhprsd.org



Ms. Brittany Schotter
*School Social Worker/Case
Manager for the Center for
Alternative Education & Job
Transition Services*
856-227-4105
Extension: 5336
bschotter@bhprsd.org



**BLACK HORSE PI
REGIONAL SCHOOL DISTRICT**

WHERE INSPIRING EXCELLENCE IS OUR S
AND STUDENT ACHIEVEMENT IS THE R

Out-of-District Case Managers

Mrs. Lindsay McDonald-Varga
School Psychologist
Extension: 4404
lvarga@bhprsd.org

Mr. Michael McIntire
School Psychologist
856-232-9703 Extension. 6038
mmcintire@bhprsd.org

- J. DeVecchis.htm
File wasn't available on site
- S. Doherty.htm
File wasn't available on site
- P. Spezzano.htm
File wasn't available on site
- J. McCarthy.jpg
7.7 KB • 3 minutes ago
- C. Richards.jpg
21.1 KB • 3 minutes ago
- B. Norcross.jpg
262 KB • 3 minutes ago



U.S. Department of Education's Individuals with Disabilities Education Act

U.S. Department of Education's Individuals with Disabilities Education Act (IDEA) website brings together IDEA information and resources from the Department and our grantees. Explore and find information and explore resources on infants, toddlers, children, and youth with disabilities.

- NJ Department of Education Office of Special Education
www.nj.gov/njded/specialed
- Center for Outreach and Services for the Autism Community
www.cosac.org
- Parents of Autistic Children
www.poac.net
- Children and Adults with Attention Deficit/Hyperactivity Disorder
www.chadd.org
- Special Education Resources on the Internet
Seriweb.com
- National Center for Learning Disabilities
www.nclld.org
- Learning Disabilities On-Line
www.ldonline.org
- Inclusive Schools and Communities
www.inclusion.com

)